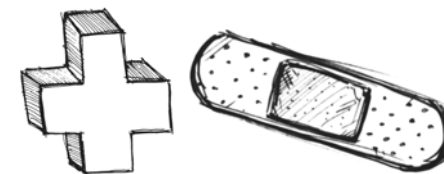




**MEDTRACK**  
 Padua Franciscan High School  
 Current Certificate Program (2011-12)



	Freshman Year	Sophomore Year	Junior Year	Senior Year
<b>Science Requirements</b>	Honors Biology	Honors Chemistry	Human Anatomy & Physiology	Honors Adv. Science Seminar* AND Physics (Regular, Honors, or AP/Honors - Mechanics (Electricity and Magnetism))
<b>Math Requirements</b>	Honors Geometry OR Honors Algebra I/Geometry <sup>1</sup>	Honors Algebra II/Trig OR Honors Geo/Algebra II/Trig (based on freshman placement)	Math Analysis/ Intro to Calculus (Honors highly recommended)	Calculus (Regular, AP/Honors AB, or AP/Honors BC)
<b>Other Requirements</b>	Language I	Language II PSAT Test - October	Language III	Bioethics & Franciscan Life Issues* <sup>2</sup>
<b>Franciscan Spirituality</b>	Tau Cross Service Mount Alverna Chapel Compassion/suffering with	San Damiano Cross Holy Family Cancer Home Medicine as a vocation/ how to pray	Clarian Healing St Vincent Charity Hospital Importance of Catholic healthcare mission	MedTrack Day of Reflection Connecting stories of St. Francis to healthcare/ Connecting the head and the heart
<b>Career Guidance &amp; Skill-Building</b>	Career Speaker Series Lunch & Learns	Career Speaker Series Lunch & Learns Sophomore Career Speaker Day - externship preparation	Career Speaker Series Lunch & Learns Junior Career Shadowing Day	Career Speaker Series Lunch & Learns
<b>Suggested Courses &amp; Activities</b>	Science Club Consider additional fine arts electives each year, schedule permitting.	Science Club PSAT Preparation - Sept	<b>Recommended Science Elective:</b> AP/Honors Biology OR AP/Honors Chemistry  Science Club SAT/ACT Preparation	Science Club Language IV
<b>Prior Summer</b>	<i>Optional:</i> Physical Education	<i>Required:</i> Introduction to Medical Terminology (online) <i>Optional:</i> Physical Education	<i>Required:</i> Healthcare Externship	<i>Optional:</i> Healthcare Externship

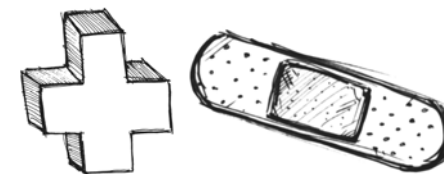
\*MedTrack students only

<sup>1</sup> For those students who have already completed Geometry by the 8<sup>th</sup> grade, special arrangements will be made to complete your four-year mathematics requirement under the MedTrack program.

<sup>2</sup> Replaces a semester of required theology



**MEDTRACK**  
 Padua Franciscan High School  
 Current Certificate Program (2011-12)



	Padua Graduation Requirements	MedTrack Requirements - Above & Beyond	Difference
<b>English</b>	4 credits	4 credits	-
<b>Theology</b>	4 credits	4 credits	Bioethics & Franciscan Life Issues substitutes for a semester of senior theology
<b>Math</b>	4 credits, beginning with the Class of 2014	4 credits	Honors emphasis
<b>Science</b>	3 credits of laboratory science, including Biology, beginning with the Class of 2013	<b>5 credits of science</b> , including 3 lab sciences (Honors Biology, Honors Chemistry, and Physics); an additional credit of AP/Honors Biology or AP/Honors Chemistry is recommended	+2 credits - Human Anatomy & Physiology and Honors Advanced Science Seminar Honors emphasis
<b>Social Studies</b>	3 credits	3 credits	-
<b>Foreign Language</b>	2 credits	<b>3 credits</b> (4 credits are ideal)	+1 credit
<b>Health</b>	½ credit	½ credit	-
<b>Physical Education</b>	½ credit	½ credit (recommended as an optional summer course to allow for scheduling flexibility)	-
<b>Fine Arts</b>	1 credit	1 credit (additional Fine Arts recommended where scheduling permits)	-
<b>Computer Science</b>	½ credit	½ credit	-
<b>Electives</b>	1-1/2 credits	<b>Elective requirements met by additional science (1 credit), Intro to Medical Terminology (¼ credit) and Healthcare Externship (¼ credit)</b>	Already met by other MedTrack requirements
<b>Total Credits</b>	24 credits	26 credits	+2 credits net addition
<b>Spirituality</b>	4 class retreats 4-year Christian Service Program Optional Kairos retreat	4 class retreats 4-year Christian Service Program <b>4 MedTrack spiritual activities</b> Optional Kairos retreat	+4 activities
<b>Other Requirements</b>		<b>Career Speaker Series</b> <b>PSAT Test in sophomore year</b> <b>Junior Career Shadowing required</b> <b>Healthcare Externship</b> <b>Maintain a minimum 3.5 cumulative GPA</b>	See detail to left

Items in red indicate a change from normal Padua graduation requirements.